

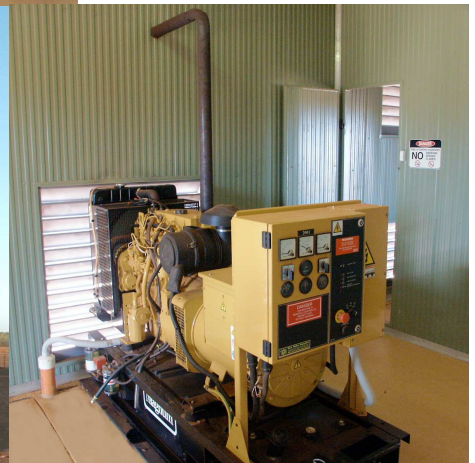
# Case Study

## Pastoral Lease



Stations use considerable amounts of power for multiple buildings, cool rooms, air conditioning and reticulation pumps.

In this instance, a three phase installation was selected with a large solar array and wind turbine to reduce the generator dependence.



**Top:** Areal shot of the station and power complex. **Middle Left:** The solar array and wind turbine. **Middle Right:** Automatic backup generator. **Bottom Left:** Deep cycle battery bank in ventilated room. **Bottom Right:** Instrument/power.



5/83 Hector Street (West)  
PO Box 1265  
OSBORNE PARK WA 6916  
Tel: 08 9244 2668  
Fax: 08 9244 1087  
E-mail: [energy@wasolar.com.au](mailto:energy@wasolar.com.au)